

A vertical image of a fire with the text "WEST CERAMICS.INC" overlaid in white. The fire is bright orange and yellow, with a black background. The text is in a stylized, white, serif font. The word "WEST" is in a smaller font size than "CERAMICS.INC".

WEST CERAMICS.INC



Ceramics, Fiberglass & Iron

Manufacturing

2020 COLLECTION

www.wesceramics.net



WES CERAMICS INC



Our planters are not only unique; they are also functional and durable.



They are constructed of the best materials available, manufactured by our remarkably skilled craftsmans and glazed inside and out to ensuring long lasting quality and lustre.



Wesceramics dedicated and knowledgeable sales and customer service team take pride in providing exceptional service and attention to every detail during and after the sales process.



Our teams of prep and finish, quality control along with packing and shipping are responsible for every planter passing our strict standars.



Each shipment is carefully packaged to arrive safely and ensure customer satisfaction.



Add excitement to your pottery display with the new 2020 original shapes and effect glaze colors!



We, at wesceramics, look forward to working with you on your next project!



Table of Contents

Ceramic Pottery & Metal

| | |
|---|---------|
| Arezzos..... | 1 |
| Pescaras..... | 1 |
| Tibor 24 & 30..... | 2 |
| Brescia..... | 2 |
| Bari..... | 2 |
| Cylinders 22,16,14 & 13..... | 3 |
| Torinos Large, Medium, Small & Tall.... | 3 |
| Vaso Pelon 32, 28 and 17..... | 4 |
| Bowl Pot Small & Large..... | 4 |
| Macerata..... | 5 |
| Parma..... | 5 |
| Maceton 16 | 5 |
| Napoli Small & Large..... | 6 |
| Roma Small & Large..... | 6 |
| Square Tall..... | 7 |
| Rectangle XI..... | 7 |
| Oval..... | 7 |
| Square XL, X, Large and Small..... | 8 |
| Copa Lisos & Cazuelas..... | 9 |
| Livornos..... | 10 |
| Perugias..... | 11 |
| Anzios XXL, XL & Large..... | 12 |
| Trompeta Urn..... | 12 |
| Medium & Small Urns..... | 12 |
| Saucers..... | 13 |
| Chart Of Glaze Colors:..... | 14 & 15 |
| Metal Stands:..... | 16 |
| Ironed (Picture)..... | 17 |

Fiberglass

| | |
|---------------------------------|---------|
| Portofino & Half Series..... | 18 |
| Squares with Lip Series..... | 19 |
| Rectangles with Lip Series..... | 19 |
| Savonna Series..... | 20 |
| Flat Cylinders Series..... | 20 |
| Square Tall Series..... | 21 |
| Flat Squares (Cube) Series..... | 21 |
| Venice Squares Series..... | 22 |
| Short Flat Squares Series..... | 22 |
| Flat Rectangles Series..... | 23 & 24 |
| Fiberglass Saucers..... | 25 |
| Fiberglass Chart Of Colors..... | 26 |

Price Lists:

| | |
|------------------------------|---------|
| Ceramics Price List..... | 27 & 28 |
| Metal Stands Price List..... | 29 |
| Ironed Price List:..... | 30 |
| Fiberglass Price List:..... | 31 & 32 |

| | |
|-------------|----------|
| Terms:..... | 33 to 38 |
|-------------|----------|

WES CERAMICS INC



***All Wesceramics products are high fired to approximately 2000 *f.
Glazing inside and outside.***



WEST CERAMICS, INC



WES CERAMICS, INC



| ITEM # | NAME | OUTSIDE DIAM | INSIDE DIAM | HEIGHT | WEIGHT | METAL STAND | SAUCER |
|-----------------------|--------------|-----------------|----------------|--------|--------|----------------|--------|
| LOW, MED, HIGH | | | | | | | |
| ARELG | AREZZO LARGE | 21" | 16.5" | 21.5" | 74 | 18" L,M,H. | S-23 |
| ARESM | AREZZO SMALL | 15.5" | 13.25" | 15.25" | 32 | 12" L,M,H. | S-15 |



ARELG



ARESM

| | | | | | | | |
|-------|---------------|-------|--------|--------|------|------------|--------|
| PESXL | PESCARA XL | 28" | 23.5" | 31" | 145 | 22" L,M,H. | S-24 * |
| PES | PESCARA | 22.5" | 17.75" | 23.5" | 70 | 18" L,M,H. | S-21 |
| PESS | PESCARA SMALL | 17.5" | 13.5" | 18.25" | 47.5 | 15" L,M,H. | S-17 |



PESXL



PES



PESS

WWW.WESKERAMICS.NET
 PO BOX 530855
 SAN DIEGO, CA. 92153

WESKERAMICS.INC
SPECIFICATIONS

PHONE: (760) 305-9462

DIRECT:(760) 840-7730

wesceramics@gmail.com

| ITEM # | NAME | OUTSIDE | INSIDE | HEIGHT | WEIGHT | METAL | SAUCER |
|--------------|----------|---------|--------|--------|--------|------------|--------|
| | | DIAM | DIAM | | | STAND | |
| LOW,MED,HIGH | | | | | | | |
| T30 | TIBOR 30 | 27 3/4 | 23 1/2 | 25 | 116 | 18" L,M,H. | S-23 |
| T24 | TIBOR 24 | 23 1/2 | 20 1/2 | 21 1/4 | 81 | 18" L,M,H. | S-23 |



| | | | | | | | |
|------|---------|-----|-----|-----|----|------------|------|
| BRE | BRESCIA | 21 | 16 | 21 | 32 | 18" L,M,H. | S-17 |
| BARI | BARI | 18" | 12" | 23" | 63 | 15-L,M,H | S-12 |



WWW.WESKERAMICS.NET
 PO BOX 530855
 SAN DIEGO, CA. 92153

WESKERAMICS, INC SPECIFICATIONS

PHONE: (760) 305-9462

DIRECT: (760) 840-7730

wesceramics@gmail.com

| ITEM # | NAME | OUTSIDE | INSIDE | HEIGHT | WEIGHT | METAL | SAUCER |
|-----------------------|-------------|---------|---------|--------|--------|------------|--------|
| | | DIAM | DIAM | | | STAND | |
| LOW, MED, HIGH | | | | | | | |
| CC22 | CYLINDER 22 | 20" | 18 1/2" | 20" | 64 | 18" L,M,H. | S-23 |
| CC16 | CYLINDER 16 | 16" | 14" | 18" | 42 | 15" L,M,H. | S-17 |
| CC14 | CYLINDER 14 | 13" | 11.5" | 11.75" | 26 | 12" L,M,H. | S-13 |
| CC13 | CYLINDER 13 | 11" | 10.25" | 11.5" | 22 | 12" L,M,H. | S-12 |



| | | | | | | | |
|------|---------------|--------|--------|-------|----|------------|------|
| TORL | TORINO LARGE | 25.25" | 21.75" | 19" | 66 | 18" L,M,H. | S-17 |
| TORM | TORINO MEDIUM | 23" | 19.25" | 17.5" | 50 | 15" L,M,H. | S-15 |
| TORS | TORINO SMALL | 18" | 14.25" | 12" | 31 | 12" L,M,H. | S-13 |
| TORT | TORINO TALL | 23" | 21.75" | 17.5" | 55 | 15" L,M,H. | S-15 |



WWW.WESKERAMICS.NET
 PO BOX 530855
 SAN DIEGO, CA. 92153

WESKERAMICS, INC
SPECIFICATIONS

PHONE: (760) 305-9462

DIRECT: (760) 840-7730

wesceramics@gmail.com

| ITEM # | NAME | OUTSIDE | INSIDE | HEIGHT | WEIGHT | METAL | SAUCER |
|-----------------------|---------------|---------|--------|--------|--------|--------------|--------|
| | | DIAM | DIAM | | | STAND | |
| LOW, MED, HIGH | | | | | | | |
| VP32 | VASO PELON 32 | 30" | 25.75" | 29" | 105 | 18" L, M. | S-23 |
| VP28 | VASO PELON 28 | 25.5" | 22" | 27" | 77 | 16" L ** | S-17 |
| VP17 | VASO PELON 17 | 17.5" | 15" | 19" | 36 | 12" L, M, H. | S-12 |



| | | | | | | | |
|-----|----------------|-----|-------|-------|----|--------------|------|
| BPL | BOWL POT LARGE | 20" | 8.5" | 18.5" | 54 | 18" L, M, H. | S-21 |
| BPS | BOWL POT SMALL | 15" | 9.25" | 12" | 23 | 12" L, M, H. | S-15 |



WWW.WESKERAMICS.NET
 PO BOX 530855
 SAN DIEGO, CA. 92153

WESKERAMICS, INC
SPECIFICATIONS

PHONE: (760) 305-9462
 DIRECT:(760) 840-7730
wesceramics@gmail.com

5

| ITEM # | NAME | OUTSIDE | INSIDE | HEIGHT | WEIGHT | METAL | SAUCER |
|-----------------------|----------|---------|--------|--------|--------|------------|--------|
| | | DIAM | DIAM | | | STAND | |
| LOW, MED, HIGH | | | | | | | |
| MACE | MACERATA | 19" | 14.5" | 12.5" | 32 | 18" L,M,H. | S-17 |
| PARM | PARMA | 17.5" | 13.5" | 18.25" | 50 | 15" L,M,H. | S-21 |



MACE



PARM

| | | | | | | | |
|------|------------------|-------|-------|--------|----|------------|------|
| M16 | MACETON 16 | 17.5" | 11.5" | 16.75" | 35 | 15" L,M,H. | S-15 |
| M16H | MACETON 16 W/HDL | 17.5" | 11.5" | 16.75" | 42 | 15" L,M,H. | S-15 |



M16



M16H

WWW.WESKERAMICS.NET
 PO BOX 530855
 SAN DIEGO, CA. 92153

WESKERAMICS, INC
SPECIFICATIONS

PHONE: (760) 305-9462

DIRECT: (760) 840-7730

wesceramics@gmail.com

| ITEM # | NAME | OUTSIDE | INSIDE | HEIGHT | WEIGHT | METAL | SAUCER |
|-----------------------|--------------|---------|--------|--------|--------|------------|--------|
| | | DIAM | DIAM | | | STAND | |
| LOW, MED, HIGH | | | | | | | |
| NAPS | NAPOLI SMALL | 20" | 16.75" | 15" | 42 | 15" L,M,H. | S-17 |
| NAPL | NAPOLI LARGE | 22.25" | 17" | 17.5" | 55.5 | 15" L,M,H. | S-20 |



NAPS



NAPL

| | | | | | | | |
|------|------------|-----|-------|-----|-----|-----|-----|
| ROMS | ROMA SMALL | 27" | 24" | 17" | 85 | N/A | N/A |
| ROML | ROMA LARGE | 32" | 27.5" | 22" | 101 | N/A | N/A |



ROMS



ROML

WWW.WESKERAMICS.NET
 PO BOX 530855
 SAN DIEGO, CA. 92153

WESKERAMICS, INC SPECIFICATIONS

PHONE: (760) 305-9462
 DIRECT: (760) 840-7730
wesceramics@gmail.com

| ITEM # | NAME | OUTSIDE DIAM | INSIDE DIAM | HEIGHT | WEIGHT | METAL STAND | SAUCER |
|--------|------|-----------------|----------------|--------|--------|----------------|--------|
|--------|------|-----------------|----------------|--------|--------|----------------|--------|

LOW, MED, HIGH

| ITEM # | NAME | OUTSIDE DIAM | INSIDE DIAM | HEIGHT | WEIGHT | METAL STAND | SAUCER |
|--------|------|-----------------|----------------|--------|--------|----------------|--------|
|--------|------|-----------------|----------------|--------|--------|----------------|--------|

LOW, MED, HIGH

| | | | | | | | |
|-------|--------------------|-----------------|---------------|--------|-----|---------|-----|
| SQTXL | SQUARE TALL XL | 21 X 21 | 18 X 18 | 31 1/4 | 112 | SQXL-MS | N/A |
| SQT | SQUARE TALL LARGE | 18 X 18 | 15 X 15 | 27 1/2 | 85 | SQL-MS | N/A |
| SQTMD | SQUARE TALL MEDIUM | 16 X 16 | 13 X 13 | 25 | 64 | SQM-MS | N/A |
| SQTSM | SQUARE TALL SMALL | 13 X 13 | 11 X 11 | 22 | 47 | SQS-MS | N/A |
| SQTSH | SQUARE TALL SHORT | 11.75" X 11.75" | 9.75" X 9.75" | 17.75" | 42 | SQS-MS | N/A |



| | | | | | | | |
|------|--------------|-----------|-----------|--------|----|-----|-----|
| REXL | RECTANGLE XL | 28 X 16.5 | 25 X 13.5 | 12 1/2 | 55 | N/A | N/A |
| OVL | OVAL | 27 X 15.5 | 24 X 12.5 | 11 | 45 | N/A | N/A |



WWW.WESKERAMICS.NET
 PO BOX 530855
 SAN DIEGO, CA. 92153

WESKERAMICS.INC
SPECIFICATIONS

DIRECT:(760) 840-7730
wesceramics@gmail.com

8

| ITEM # | NAME | OUTSIDE DIAM | INSIDE DIAM | HEIGHT | WEIGHT | METAL STAND | SAUCER |
|----------------|------|-----------------|----------------|--------|--------|----------------|--------|
| LOW, MED, HIGH | | | | | | | |

| ITEM # | NAME | OUTSIDE DIAM | INSIDE DIAM | HEIGHT | WEIGHT | METAL STAND | SAUCER |
|----------------|------|-----------------|----------------|--------|--------|----------------|--------|
| LOW, MED, HIGH | | | | | | | |

| | | | | | | | |
|------|-----------|---------|---------|----|-----|-----|-----|
| SQXL | SQUARE XL | 27 X 27 | 23 X 23 | 24 | 113 | N/A | N/A |
| SQX | SQUARE X | 23 x 23 | 19 X 19 | 22 | 72 | N/A | N/A |



SQXL



SQX

| | | | | | | | |
|-----|--------------|-------------|---------|--------|----|-----|------|
| SQL | SQUARE LARGE | 18.5 X 18.5 | 17 x 17 | 19 1/2 | 58 | N/A | N/A |
| SQS | SQUARE SMALL | 14 x 13 | 11 x 10 | 14 1/4 | 24 | N/A | S-12 |



SQL



SQS

WWW.WESKERAMICS.NET
 PO BOX 530855
 SAN DIEGO, CA. 92153

WESKERAMICS, INC SPECIFICATIONS

PHONE: (760) 305-9462
 DIRECT: (760) 840-7730
wesceramics@gmail.com

| ITEM # | NAME | OUTSIDE DIAM | INSIDE DIAM | HEIGHT | WEIGHT | METAL STAND | SAUCER |
|-----------------------|------------------|-----------------|----------------|--------|--------|----------------|--------|
| LOW, MED, HIGH | | | | | | | |
| ITEM # | NAME | OUTSIDE DIAM | INSIDE DIAM | HEIGHT | WEIGHT | METAL STAND | SAUCER |
| LOW, MED, HIGH | | | | | | | |
| CLM | COPA LISO MEDIUM | 24" | 21" | 12.5" | 60 | 18" L,M,H. | S-21 |
| CLS | COPA LISO SMALL | 19" | 16.75" | 10" | 30 | 15" L,M,H. | S-17 |



| | | | | | | | |
|------|------------|--------|--------|-------|----|------------|------|
| CZ25 | CAZUELA 25 | 24.5" | 22.25" | 6.75" | 35 | 18" L,M,H. | N/A |
| CZ20 | CAZUELA 20 | 19.75" | 17.5" | 7.5" | 26 | 15" L,M,H. | S-21 |
| CZ15 | CAZUELA 15 | 15" | 13.75" | 7.75" | 10 | 12" L,M,H. | S-17 |



WWW.WES CERAMICS.NET
 PO BOX 530855
 SAN DIEGO, CA. 92153

WES CERAMICS, INC
SPECIFICATIONS

PHONE: (760) 305-9462
 DIRECT:(760) 840-7730
wesceramics@gmail.com

10

| ITEM # | NAME | OUTSIDE DIAM | INSIDE DIAM | HEIGHT | WEIGHT | METAL STAND | SAUCER |
|--------|---------------|-----------------|----------------|--------|--------|----------------|--------|
| | | | | | | LOW, MED, HIGH | |
| ITEM # | NAME | OUTSIDE DIAM | INSIDE DIAM | HEIGHT | WEIGHT | METAL STAND | SAUCER |
| | | | | | | LOW, MED, HIGH | |
| LIVS | LIVORNO SMALL | 28" | 26" | 12" | 58 | 18" L,M,H. | N/A |



LIVS

| | | | | | | | |
|------|---------------|-----|-----|-----|----|------------|-----|
| LIVL | LIVORNO LARGE | 34" | 31" | 12" | 71 | 18" L,M,H. | N/A |
|------|---------------|-----|-----|-----|----|------------|-----|



LIVL

WWW.WES CERAMICS.NET
 PO BOX 530855
 SAN DIEGO, CA. 92153

WES CERAMICS, INC
SPECIFICATIONS

PHONE: (760) 305-9462
 DIRECT: (760) 840-7730
wesceramics@gmail.com

| ITEM # | NAME | OUTSIDE DIAM | INSIDE DIAM | HEIGHT | WEIGHT | METAL STAND | SAUCER |
|--------|---------------|-----------------|----------------|--------|--------|----------------|--------|
| | | | | | | LOW, MED, HIGH | |
| ITEM # | NAME | OUTSIDE DIAM | INSIDE DIAM | HEIGHT | WEIGHT | METAL STAND | SAUCER |
| | | | | | | LOW, MED, HIGH | |
| PERSM | PERUGIA SMALL | 22" | 16.75" | 8.5" | 36.5 | 18 L, M, H | S-23 |



PERSM

| | | | | | | | |
|-------|---------------|-----|-------|-----|----|-----|-----|
| PERLG | PERUGIA LARGE | 30" | 23.5" | 11" | 77 | N/A | N/A |
|-------|---------------|-----|-------|-----|----|-----|-----|



PERLG

WESKERAMICS, INC SPECIFICATIONS

| ITEM # | NAME | OUTSIDE DIAM | INSIDE DIAM | HEIGHT | WEIGHT | METAL STAND | SAUCER |
|--------|------|-----------------|----------------|--------|--------|----------------|--------|
|--------|------|-----------------|----------------|--------|--------|----------------|--------|

LOW, MED, HIGH

| ITEM # | NAME | OUTSIDE DIAM | INSIDE DIAM | HEIGHT | WEIGHT | METAL STAND | SAUCER |
|--------|------|-----------------|----------------|--------|--------|----------------|--------|
|--------|------|-----------------|----------------|--------|--------|----------------|--------|

LOW, MED, HIGH

| | | | | | | | |
|--------|---------------|-----|-------|-------|-----|-------|------|
| ANZXXL | ANZIO URN XXL | 23" | 11.5" | 42.5" | 125 | 18" L | S-21 |
| ANZXL | ANZIO URN XL | 23" | 11" | 34.5" | 112 | 18" L | S-21 |
| ANZL | ANZIO URN LG | 23" | 13" | 26" | 89 | 18" L | S-21 |



ANZXXL



ANZXL



ANZL

| | | | | | | | |
|-----|--------------|-------|-------|--------|----|-------|------|
| TPU | TROMPETA URN | 14.5" | 6" | 38.25" | 62 | 15" L | S-17 |
| MEU | MEDIUM URN | 19" | 9.5" | 26.5" | 67 | 15" L | S-17 |
| SU | SMALL URN | 16" | 8.25" | 23" | 43 | 12" L | S-15 |



TPU



MEU



SU

| ITEM # | NAME | OUTSIDE | INSIDE | HEIGHT | WEIGHT |
|--------|------------|---------|--------|--------|--------|
| | | DIAM | DIAM | | |
| S-23 | 23" SAUCER | 23" | 19/14" | 4" | 31 |
| S-21 | 21" SAUCER | 21" | 17" | 3.5" | 26 |
| S-20 | 20" SAUCER | 20" | 18" | 3" | 18 |
| S-17 | 17" SAUCER | 17" | 13.25" | 2.75" | 15 |
| S-15 | 15" SAUCER | 15.5" | 12.5" | 2.25" | 11 |
| S-13 | 13" SAUCER | 13.25" | 11.25" | 1.5" | 6 |
| S-12 | 12" SAUCER | 12" | 10" | 1.25" | 3 |
| S-08 | 8" SAUCER | 8" | 6" | 1" | 2 |





WESKERAMICS.INC
CHART OF COLORS
2



SKY BLUE



ORANGE



BLACK GLOSS

GRANITE FINISH

- ** UNIQUE FINISH MADE WITH VERY SMALL NATURAL ROCK PARTICLES.**
- ** WARRANTY EXTENDED FOR 5 YEARS!**
- ** CLEAN EASILY WITH BRUSH OR HOSE WATER JET!**



GRANITE



SANDSTONE



JADE



BASALT



LAVA



ZIRCON

2020 Catalog & Specifications.



PHONE: (760) 305-9462

DIRECT: (760) 840-7730

wesceramics@gmail.com

WWW.WESCERAMICS.NET

PO BOX 530855

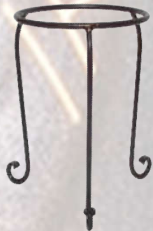
SAN DIEGO, CA. 92153

METAL STANDS

16

| ITEM # | TYPE | OUTSIDE | HEIGHT | WEIGHT | |
|--------|-----------------------------|---------|--------|--------|--|
| | | DIAM | | | |
| H-12 | HIGH SINGLE LEG METAL STAND | 12 | 23 | 6 | |
| H-15 | HIGH SINGLE LEG METAL STAND | 15 | 23 | 7 | |
| H-18 | HIGH SINGLE LEG METAL STAND | 18 | 23 | 8 | |

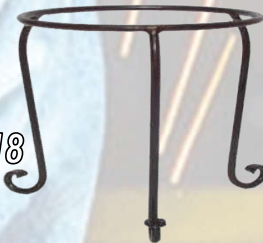
H-12



H-15



H-18



| | | | | | |
|------|---------------------------|----|----|---|--|
| M-12 | MD SINGLE LEG METAL STAND | 12 | 16 | 4 | |
| M-15 | MD SINGLE LEG METAL STAND | 15 | 16 | 5 | |
| M-18 | MD SINGLE LEG METAL STAND | 18 | 16 | 6 | |

M-12



M-15



M-18



| | | | | | |
|------|----------------------------|----|----|---|--|
| L-12 | LOW SINGLE LEG METAL STAND | 12 | 10 | 3 | |
| L-15 | LOW SINGLE LEG METAL STAND | 15 | 10 | 4 | |
| L-18 | LOW SINGLE LEG METAL STAND | 18 | 10 | 5 | |

L-12



L-15



L-18



| | | | | | |
|------|------------------------|----|----|---|--|
| D-12 | DOUBLE LEG METAL STAND | 12 | 20 | 2 | |
| D-15 | DOUBLE LEG METAL STAND | 15 | 20 | 3 | |
| D-18 | DOUBLE LEG METAL STAND | 18 | 20 | 4 | |

D-12



D-15



D-18



2020 Catalog & Specifications.

WWW.WESKERAMICS.NET

PO BOX 530855

SAN DIEGO, CA. 92153

WESKERAMICS, INC

IRONED

PHONE: (760) 305-9462

DIRECT: (760) 840-7730

wesceramics@gmail.com

17



PORTOFINO & HALF SERIES

| CODE | OUTSIDE DIAMETER | INSIDE DIAMETER | HEIGHT | PRICE |
|---------|------------------|-----------------|--------|-------|
| PTR-56 | 56 | 48 | 34 3/4 | |
| PTR-42 | 42 1/2 | 36 3/4 | 28 3/4 | |
| PTR-36 | 36 | 32 | 26 | |
| PTR-30 | 30 | 26 | 22 3/4 | |
| PTR-24 | 24 | 20 3/4 | 19 | |
| PTRH-36 | 36 X 18 | 35 X 17 | 26 | |
| PTRH-30 | 30 X 15 | 25 X 12 | 22 3/4 | |



SQUARE W/LIP SERIES

| CODE | LONG | WIDE | HEIGHT | PRICE |
|--------|------|------|--------|-------|
| SQL-32 | 32 | 32 | 30 | |
| SQL-26 | 26 | 26 | 25 | |
| SQL-22 | 22 | 22 | 20 | |



| CODE | LONG | WIDE | HEIGHT | PRICE |
|---------|------|------|--------|-------|
| RECL-45 | 45 | 23 | 23 | |
| RECL-36 | 36 | 19 | 19 | |



Fiberglass

SAVONNA SERIES

| CODE | O.DIAMETER | HEIGHT | BASE | PRICE |
|-------|------------|--------|------|-------|
| SA-18 | 18 | 16 | 16 | |
| SA-22 | 22 | 19 | 19 | |
| SA-25 | 25 | 24 | 22 | |
| SA-30 | 30 | 27 | 27 | |
| SA-36 | 36 | 32 | 31 | |



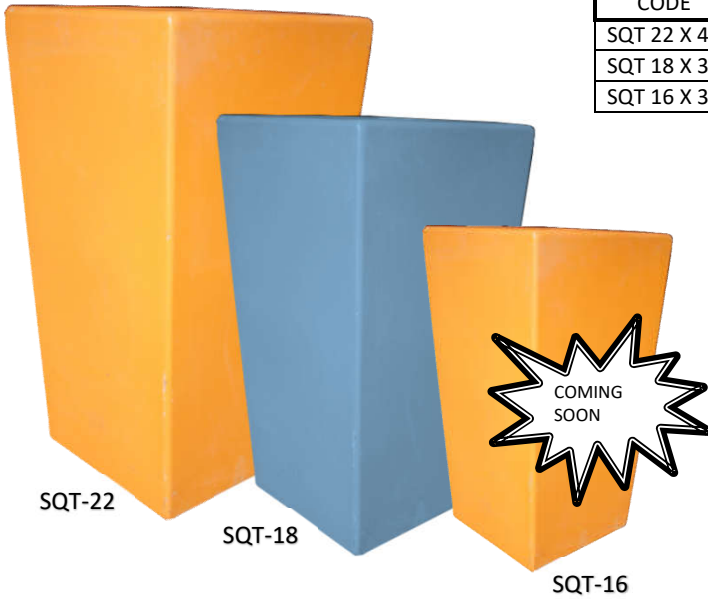
FLAT CYLINDERS SERIES

| CODE | O.DIAMETER | HEIGHT | BASE | PRICE |
|--------|------------|--------|------|-------|
| CYL-22 | 22 | 22 | 22 | |
| CYL-26 | 26 | 26 | 26 | |
| CYL-30 | 30 | 30 | 30 | |



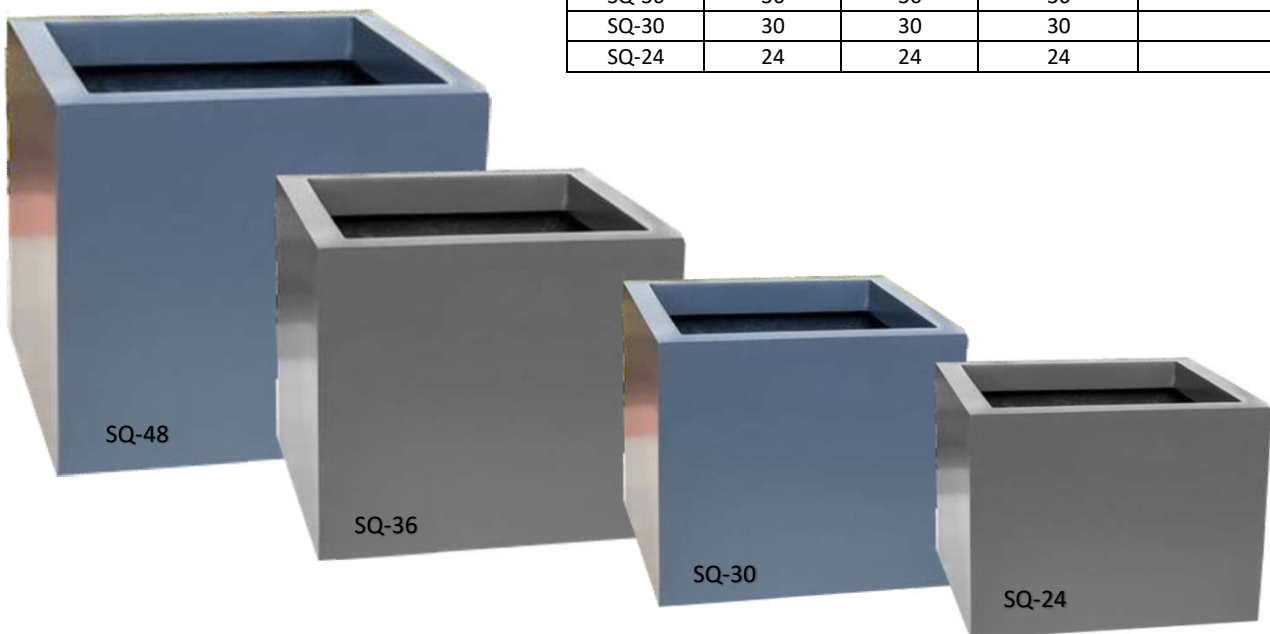
SQUARE TALL SERIES

| CODE | DIAMETER | HEIGHT | BASE | PRICE |
|-------------|----------|--------|--------|-------|
| SQT 22 X 42 | 22 X 22 | 42 | 18 | |
| SQT 18 X 34 | 18 X 18 | 34.5 | 14 3/4 | |
| SQT 16 X 30 | 16 X 16 | 30.5 | 13 | |



FLAT SQUARE SERIES

| CODE | LONG | WIDE | HEIGHT | PRICE |
|-------|------|------|--------|-------|
| SQ-48 | 48 | 48 | 48 | |
| SQ-36 | 36 | 36 | 36 | |
| SQ-30 | 30 | 30 | 30 | |
| SQ-24 | 24 | 24 | 24 | |



Fiberglass

VENICE SQUARE SERIES

| CODE | TOP | HEIGHT | BASE | PRICE |
|--------|---------|--------|------|-------|
| VEN-22 | 22 X 22 | 19 | 19 | |
| VEN-25 | 25 X 25 | 24 | 22 | |
| VEN-36 | 36 X 36 | 32 | 31 | |
| VEN-42 | 42 X 42 | 36 | 34 | |
| VEN-60 | 60 X 60 | 36 | 54 | |



VEN-25

VEN-22

SHORT FLAT SQUARES

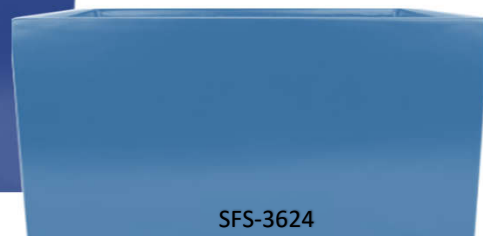
| CODE | LONG | WIDE | HEIGHT | PRICE |
|---------|------|------|--------|-------|
| SQ-3632 | 36 | 36 | 32 | |
| SQ-3630 | 36 | 36 | 30 | |
| SQ-3624 | 36 | 36 | 24 | |



SFS-3632



SFS-3630



SFS-3624

Fiberglass

FLAT RECTANGLE SERIES

| CODE | LONG | WIDE | HEIGHT | PRICE |
|-------------|------|------|--------|-------|
| R-36X18X24 | 36 | 18 | 24 | |
| R-39X15X20 | 39 | 15 | 20 | |
| R-43X12X12 | 43 | 12 | 12 | |
| R-48X12X16 | 48 | 12 | 16 | |
| R-48X15X24 | 48 | 15 | 24 | |
| R-48X16X24 | 48 | 16 | 24 | |
| R-48X24X24 | 48 | 24 | 24 | |
| R-51X15X16 | 51 | 15 | 16 | |
| R-60X12X20 | 60 | 12 | 20 | |
| R-60X15X16 | 60 | 15 | 16 | |
| R-60X16X30 | 60 | 16 | 30 | |
| R-60X24X24 | 60 | 24 | 24 | |
| R-70X18X16 | 70 | 18 | 16 | |
| R-72X15X30 | 72 | 15 | 30 | |
| R-72X18X24 | 72 | 18 | 24 | |
| R-72X24X36 | 72 | 24 | 36 | |
| R-72X24X42 | 72 | 24 | 42 | |
| R-72X30X30 | 72 | 30 | 30 | |
| R-84X30X30 | 84 | 30 | 30 | |
| R-108X12X24 | 108 | 12 | 24 | |
| R-120X24X30 | 120 | 24 | 30 | |
| R-137X48X30 | 137 | 48 | 30 | |



Fiberglass



R-24LX10WX11.5H

FLAT RECTANGLE SERIES

| CODE | LONG | WIDE | HEIGHT | PRICE |
|------------------|------|------|--------|-------|
| R-24 X 10 X 11.5 | 24 | 10 | 11.5 | |
| R-26 X 10 X 11.5 | 26 | 10 | 11.5 | |
| R-30 X 10 X 11.5 | 30 | 10 | 11.5 | |
| R-32 X 10 X 11.5 | 32 | 10 | 11.5 | |
| R-36 X 10 X 11.5 | 36 | 10 | 11.5 | |
| R-38 X 10 X 11.5 | 38 | 10 | 11.5 | |
| R-42 X 10 X 11.5 | 42 | 10 | 11.5 | |
| R-48 X 10 X 11.5 | 48 | 10 | 11.5 | |
| R-60 X 10 X 11.5 | 60 | 10 | 11.5 | |



Fiberglass

ROUND SAUCERS

| CODE | DIAM | WIDE | HEIGHT | PRICE |
|-------|------|------|--------|-------|
| RS-12 | 12 | 10 | 2 | |
| RS-14 | 14 | 12 | 2 | |
| RS-16 | 16 | 14 | 2 | |
| RS-18 | 18 | 16 | 2 | |
| RS-20 | 20 | 18 | 2 | |
| RS-22 | 22 | 20 | 2 | |
| RS-24 | 24 | 22 | 2 | |
| RS-26 | 26 | 24 | 3 | |
| RS-28 | 28 | 26 | 3 | |

